

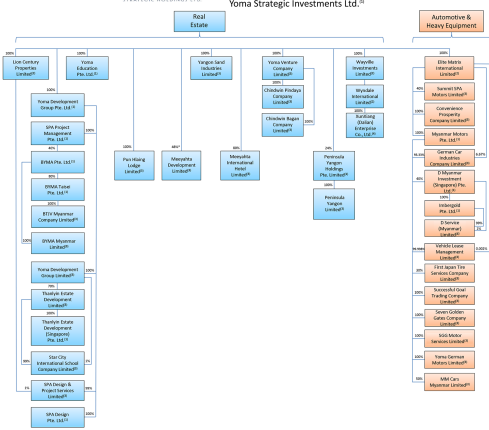


[Download Bella UK – 3 March 2020 \(.PDF\)](#)

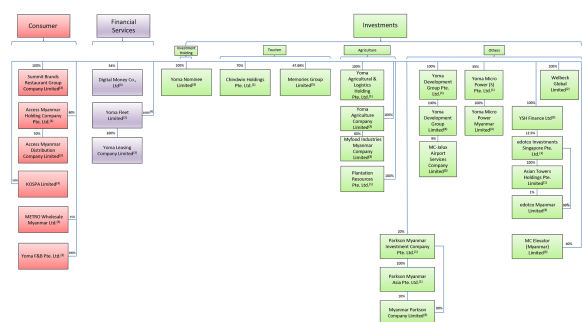
Corporate Structure
 (As at 23 May 2018)



Yoma Strategic Holdings Ltd.⁽¹⁾
 Yoma Strategic Investments Ltd.⁽²⁾



Notes:
 (1) Incorporated in Singapore
 (2) Incorporated in Hong Kong
 (3) Incorporated in Myanmar
 (4) Incorporated in the Republic of China
 (5) Incorporated in the Republic of China
 *Ultimate effective interest will be 49% upon completion of certain conditions.



Notes:
 (1) Incorporated in Singapore
 (2) Incorporated in Hong Kong
 (3) Incorporated in Myanmar
 (4) Incorporated in the Republic of China
 (5) Listed on the Capital Board of the SFC
 (6) 100% held through Myanmar Strategic Pte. Ltd., a wholly owned subsidiary of Yoma Strategic Investments Ltd.

[Download Bella UK – 3 March 2020 \(.PDF\)](#)



